

Transmitters

RS/CS Position Transmitter

Description

The all new analog current transmitter features the latest in solid state transmitter design. A field proven design sends a 4-20mA output signal to any 2 wire indicating device. The high performance electronic circuit functions with one of the lowest operating voltages in the industry: 5 volts DC with a maximum load resistance of 1650 ohms at 38 volts DC.

Non-interacting zero and span potentiometers easily adjust the desired settings. In most cases, one pass of the setup procedure is all that is required. Reversal of a single connector changes potentiometer direction.

The printed circuit boards small physical size allows it to be utilized in various enclosures. Standard printed circuit boards offer fuse and transient protection for the transmitter and low current proximity sensors. The printed circuit board has a conformal coating which resists harsh environments.

User Design Flexibility

The Westlock Dual Display Monitor allows a user the flexibility to design a valve monitoring system around processing requirements as the need for additional information is required. The Full Range AccuTrak offers design and operating personnel the following distinct advantages.

- 0-100% readout of valve travel is continuously monitored by an analog output signal. By combining an analog current output signal with two limit switches, the AccuTrak now offers complete travel range display, accuracy and speed of response. Additionally, a 1000 ohm resistive analog output, proportional to valve position, can be provided for continuous remote monitoring, trend analysis, or computer interface.

- Limit switches for positive end position monitoring of valve travel.

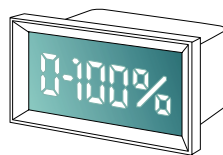
- Local mechanical display of valve position throughout the full range of travel.

4-20 mA Transmitter

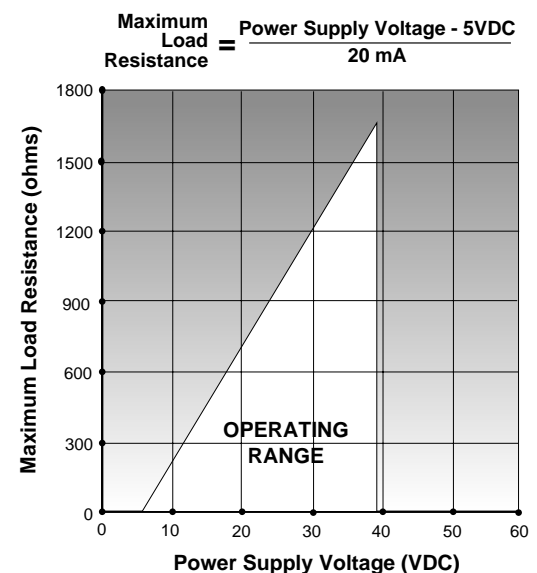
- Precision analog position transmitter.
- Operates with any voltage from 5 to 38 volts DC.
- Reverse polarity protected.
- Transient protected.
- Easy set up, non-interactive adjustment.
- CW and CCW rotation easily accommodated.
- Accommodates long cable runs and multiple receivers.
- Available with proximity sensors or mechanical switches.

CS POSITION TRANSMITTER

Power Supply Range:	5 volts DC to 38 volts DC
Operating Temperature Range:	-24°C to 85°C
Recommended Power Supply:	24 volts DC
Output Signal Range:	4 to 20 milliamperes DC
Load Impedance:	0 to 950 ohms at 24 volts DC
Output Current Limit:	55 milliamperes DC
Ambient Temperature:	For a 100°C change in ambient temperature. The maximum zero shift is plus or minus .3%, and the maximum span shift is plus or minus .4% of span.
Maximum Rotation:	95°
Minimum Rotation:	45°
Linearity:	Plus or minus 1.0%
Hysteresis:	.55% of full scale
Repeatability:	Plus or minus .3% of full scale
Power Supply:	Output signal changes .018% when the supply voltage is varied between 5 and 38 volts DC.

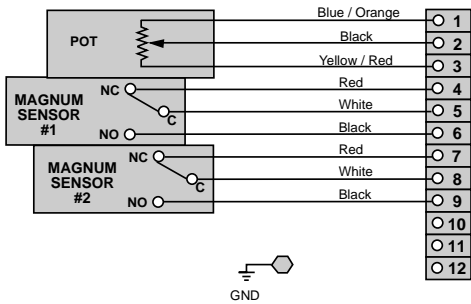


The RS and CS options monitor valves throughout a 0-100% range. At full open or closed, switches will confirm end position limits.



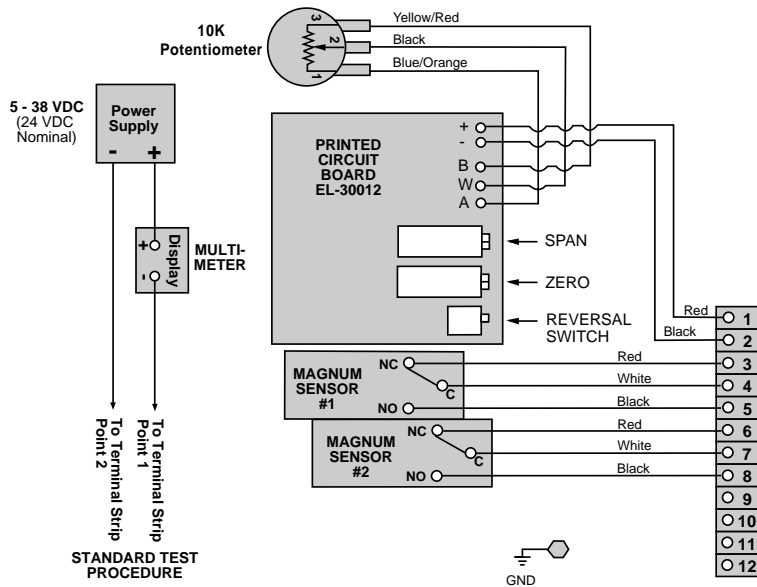
2 - SPDT Magnum Sensors

with RS Option & 12 Point Terminal Strip



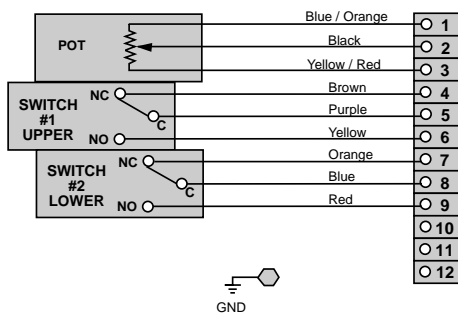
2 - SPDT Magnum Sensors

with CS (4-20 mA) Transmitter & 12 Point Terminal Strip



2 - SPDT Mechanical Switches

with RS Option & 12 Point Terminal Strip



2 - SPDT Mechanical Switches

with CS (4-20 mA) Transmitter & 12 Point Terminal Strip

