



Low Power Control Monitor for use in Non-Hazardous Areas

## Quantum® Dual Coil General Purpose

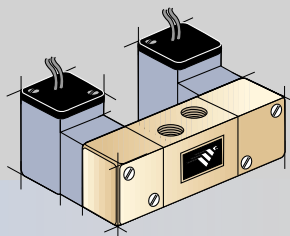
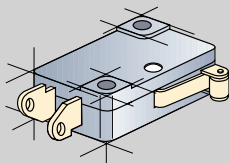
Offering an extremely efficient and compact method for the integration of position sensors and dual coil solenoid valves, the Quantum® combines three individual components (junction housing, sensors, and dual coil solenoids) into a single cost effective unit.

Designed specifically for General Purpose applications, position sensors and low power dual coil Falcon™ solenoid valves are combined into a single unit adhering to

NEMA 4, 4x requirements. Available in an engineered resin enclosure, the Quantum standardly houses two SPDT Form C Micro-Switches and a wide range of integrated dual coil solenoid valves in four-way configurations. Falcon solenoid valves are available in a variety of coil voltages and body materials with stainless steel internals as standard. Cv. values range from .3 to 3.5.



### Standard Sensor Options



### Micro-Switch V3 SPDT Form C, UL, CSA

| AMPS | SPDT (V3) |     | DPDT (Licon) |     |
|------|-----------|-----|--------------|-----|
|      | VAC       | VDC | AMPS         | VAC |
| 15   | 125       |     | 10           | 125 |
| 15   | 250       |     | 10           | 250 |
| 10   |           | 24  |              |     |
| .50  |           | 125 |              |     |
| .25  |           | 250 |              |     |

### COIL POWER SUPPLY

|                   | COILS     |          |            |           |
|-------------------|-----------|----------|------------|-----------|
|                   | 24 VDC    | 120 VAC  | 125 VDC    | 220 VAC   |
| Operating Voltage | 24 VDC    | 120 VAC  | 125 VDC    | 220 VAC   |
| Wattage           | 0.5 Watts | 4 Watts  | 0.85 Watts | 4 Watts   |
| Operating Current | 20 mA     | 29.5 mA  | 6.76 mA    | 19 mA     |
| Coil Resistance   | 1200 Ohms | 610 Ohms | 18500 Ohms | 2200 Ohms |

# Quantum® Dual Coil General Purpose

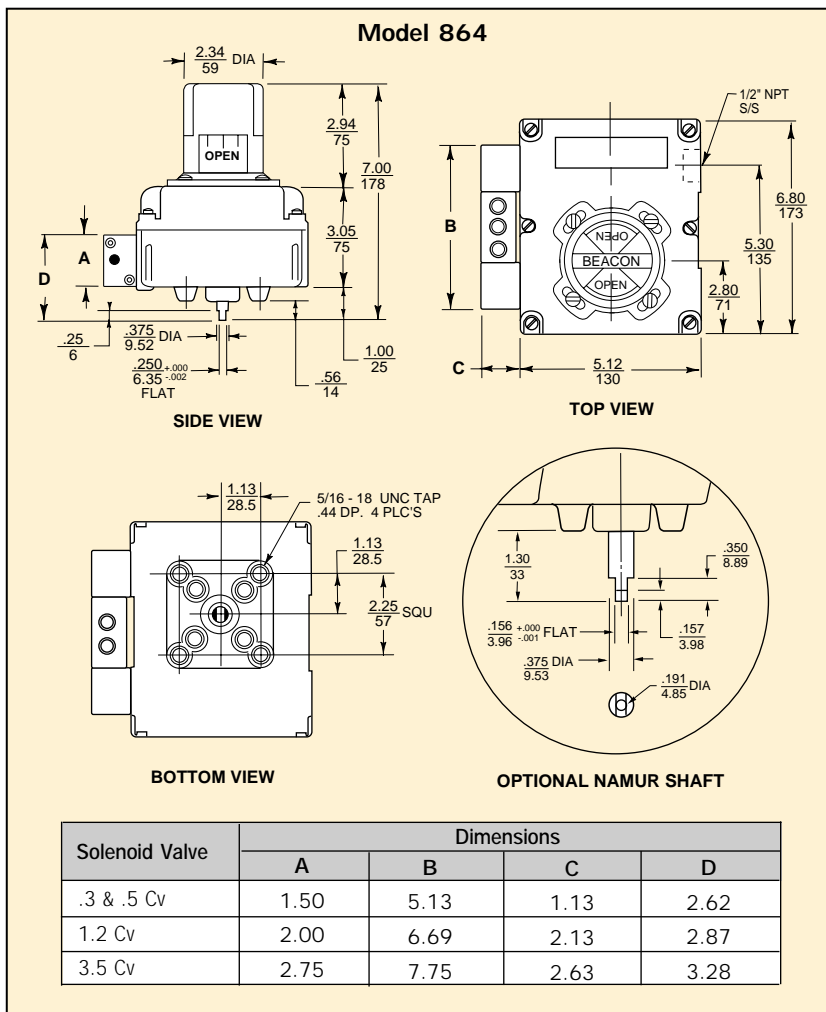
### AREA CLASSIFICATIONS

NEMA 4, 4x

### ORDERING GUIDE (FALCON® SOLENOID)

| COILS  | CV     | Body     | 4-Way       |
|--|--------|----------|-------------|
| <b>FSO</b><br>24 VDC<br>0.5 watts            | .3 Cv  | Brass    | <b>2900</b> |
|  |        | Alum.    | <b>3900</b> |
|  |        | 303 S.S. | <b>4900</b> |
|  |        | 316 S.S. | <b>5900</b> |
| <b>FAO</b><br>120 VAC<br>4.0 watts           | .5 Cv  | Delrin   | <b>6900</b> |
|  |        | Brass    | <b>2000</b> |
|  |        | Alum.    | <b>3000</b> |
| <b>FVO</b><br>125 VDC<br>0.85 watts          | .5 Cv  | 303 SS   | <b>4000</b> |
|  |        | 316 S.S. | <b>5000</b> |
|  |        | Delrin   | <b>6000</b> |
| <b>FHO</b><br>220 VAC<br>4.0 watts           | 1.2 Cv | Brass    | <b>2Y00</b> |
|  |        | Alum.    | <b>3Y00</b> |
|  |        | 303 S.S. | <b>4Y00</b> |
|  |        | 316 S.S. | <b>5Y00</b> |
|  |        | Delrin   | <b>6Y00</b> |
| OPTIONAL FEATURES (See BULLETIN NO. 0-18.00) | 3.5 Cv | Alum.    | <b>3Z00</b> |
|  |        | Delrin   | <b>6Z00</b> |

### DIMENSIONS (inches/mm)



Note: Minimum operating pressure: 45 psi.

### ORDERING GUIDE

| QUANTUM™ LP  | BEACON™  | 3-WAY BEACON™               | SENSOR   | SOLENOID (Falcon®)                      |
|--|--|-----------------------------|--|---|
| <b>864</b><br>Engineered Resin<br>NEMA 4, 4x<br><br><br> | <b>STANDARD</b><br>(Black & Yellow) <b>BY</b><br>          | <b>90° Rotation B1</b><br>  | Mech. (SPDT) <b>M2</b><br><br>Mech. (DPDT) <b>M4</b><br><br> | Use above listing for ordering solenoid |
|  | <b>ANSI YELLOW</b><br>(Inherently Hazardous) <b>AY</b><br> | <b>90° Rotation B3</b><br>  |  |   |
|  | <b>ANSI GREEN</b><br>(Liquid-Low Hazard) <b>AG</b><br>     | <b>90° Rotation B5</b><br>  |  |   |
|  | <b>ANSI BLUE</b><br>(Gas-Low Hazard) <b>AB</b><br>         | <b>180° Rotation B7</b><br> |  |   |
|  | <b>ANSI RED</b><br>(Fire Quenching) <b>AR</b><br>          | <b>180° Rotation B9</b><br> |  |   |

NOTE: Model 864 Max. 3 Switches

Ordering Example: Quantum LP General Purpose, resin enclosure with standard black & yellow Beacon, 2 mechanical switches and Falcon 120 VAC/4.0 watts, .5 Cv, brass, 4-Way solenoid valve. 864-BY-M2-FAO-2000

Westlock reserves the right to change product designs and specifications without notice, and is not responsible for errors and omissions.