



Position Transmitters for AccuTrak Linear Valve Position Monitors

AccuTrak® Position Transmitters All Classes & Groups

Westlock transmitter options combine local visual display with remote electronic signaling for continuous flow device status. Point-to-point limit switch signaling is integrated with on-site visual monitoring and full range analog position transmission in one compact NEMA 4, 4x, 7 & 9 enclosure.

Available in three separate configurations (analog resistive, analog current, or digital sensing with analog current output), Westlock transmitters offer complete travel range display for continuous remote monitoring. The RS, CS, and DT options monitor control valves throughout a 0-100% range. At full open or closed, switches will additionally confirm end position limit.

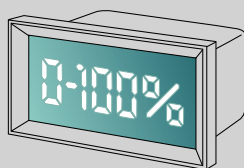


CS: A 4-20 mA or analog current output proportional to valve position. The CS current transmitter features the latest technology in solid state transmitter design and delivers one of the lowest operating voltages in the industry (5 VDC) with a maximum load resistance of 1650 ohms at 38 volts DC.



RS: A 1000 ohm or 10,000 ohm analog resistive output proportional to valve position.

0-100% Position Transmission



Resistive Output Signal

Standard Output Signal: 1000 ohms
Power Rating at 70°C: 1 watt
Elements: Conductive Plastic
Rotational Life (no load): 100,000 cycles

Current Output Signal

Standard Output Signal: 4-20 mA DC, 2 wire
Power Requirements: 5-38 VDC
Max. Load Resistance at 24 VDC: 950 ohms
Operating Temperature: -24°C TO 85°C

Note: For detailed transmitter specifications, see page A-41 of AccuTrak rotary section.

AccuTrak® Position Transmitters

DT: Westlock has merged absolute encoder sensing technology with loop-powered analog transmission to create the Spectrum DT full-range position monitor. Establishing a new performance standard, the communication mode continues to be the standard 4-20 mA analog signal while actual sensing is achieved by a true digital sensor.

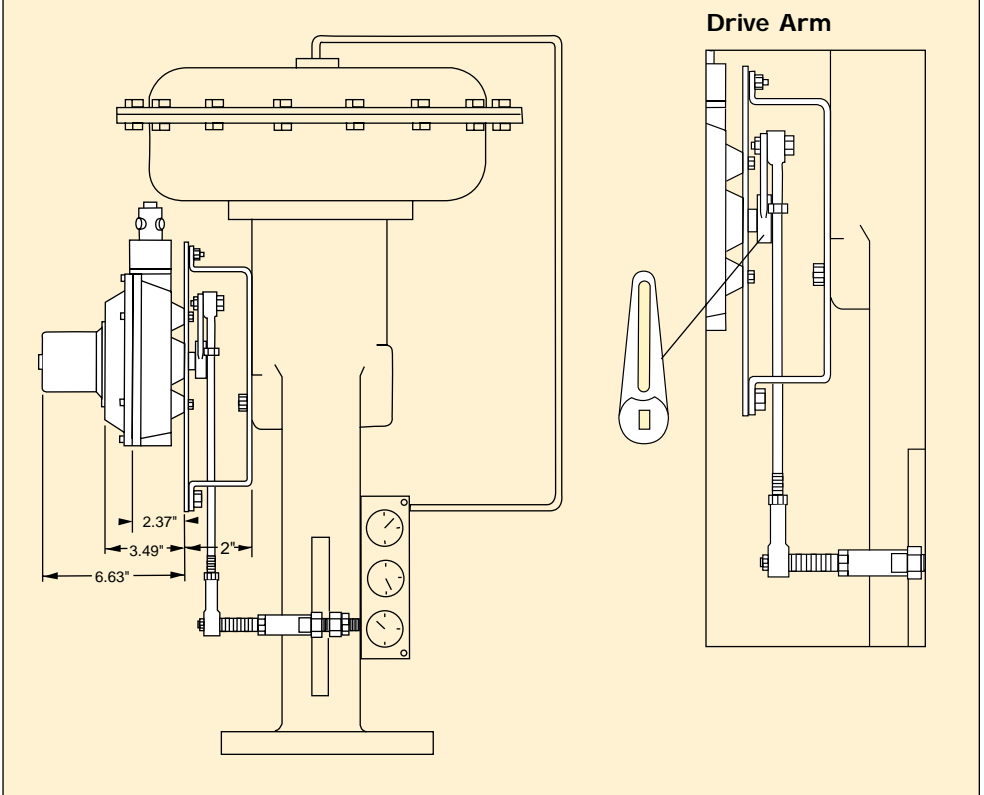


The Spectrum DT Position Transmitter derives its operating power from the 4-20mA loop itself, with no need for an external power connection. This is a high-level signal not easily affected by outside noise. In addition to the advantages of standardization, reduced field wiring costs and immunity from most electrical noise, the 4-20mA transmitter offers these benefits:

- Any number of signal receivers can be series-connected into the signal circuit without upsetting calibration.
- Multiple transmitters may share the same power supply.
- A 4-20mA signal is a "live zero" signal, which distinguishes a process condition (4mA) from an open circuit condition (0mA).
- No position loss on power down.
- Operates in electrically noisy environments.

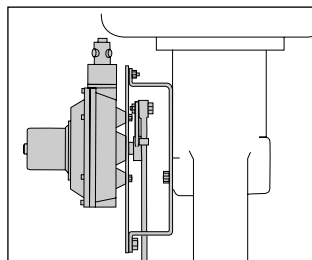
DIMENSIONS (inches/mm)

For Fisher Size 30 thru 87 Actuators



ORDERING GUIDE (Position Monitors & Transmitters)

ROTARY TO LINEAR CONVERTORS



Order standard AccuTrak/ Eliminator Models and specify Rotary to Linear Convertor.

Also, please specify Actuator Manufacturer and Model Number.